

Around the Sound Community Band

Member of
Community Bands Northwest
1111 NE 200th St
Shoreline, WA 98155

Phone: (206) 417-8129

E-mail: info-request@communitybandsnw.org

Website: communitybandsnw.org

Music Director: Mike Irons

Dear Highline Community Band,

We would like to take this opportunity to welcome your band to the Shoreline Community Band Festival. We are very excited about the up coming event and have been busy making preparations for the past few months. Hopefully this letter will answer any question that you may have. We have six bands participating in the festival this year. The following is the list of groups with their playing times.

12:00 pm-12:45 pm

1:00 pm-1:30 pm

1:45 pm- 2:15 pm

2:30 pm- 3:00 pm

3:15 pm- 3:45 pm

4:00 pm- 4:30 pm

Sound of Freedom (US Navy Band) Silverdale WA.

Around the Sound Community Band Shoreline

Lynnwood Community Band

Monroe Community Concert Band

Woodinville Community Band

Highline Community Band

Each group is being asked to limit their playing time to a half hour, with fifteen minutes teardown and set up time in between groups except for the Navy Band which has 45 minutes. Tuning and warm up must be done on stage prior to your performance so please be ready to take the stage 15 minutes prior to your scheduled performance time. I recommend having your instruments set up and ready to go one group ahead of your playing time. There will be a stage crew that will set up chairs and stands prior to your taking the stage so please fill out and return the stage setup form by May 20th. Would you also please send a copy of pieces you plan to performance with composer-arranger and a list of personnel in the band. This information is necessary so we may print a program. Names will not be printed in the program but we would like to make out name tags for attending band members.

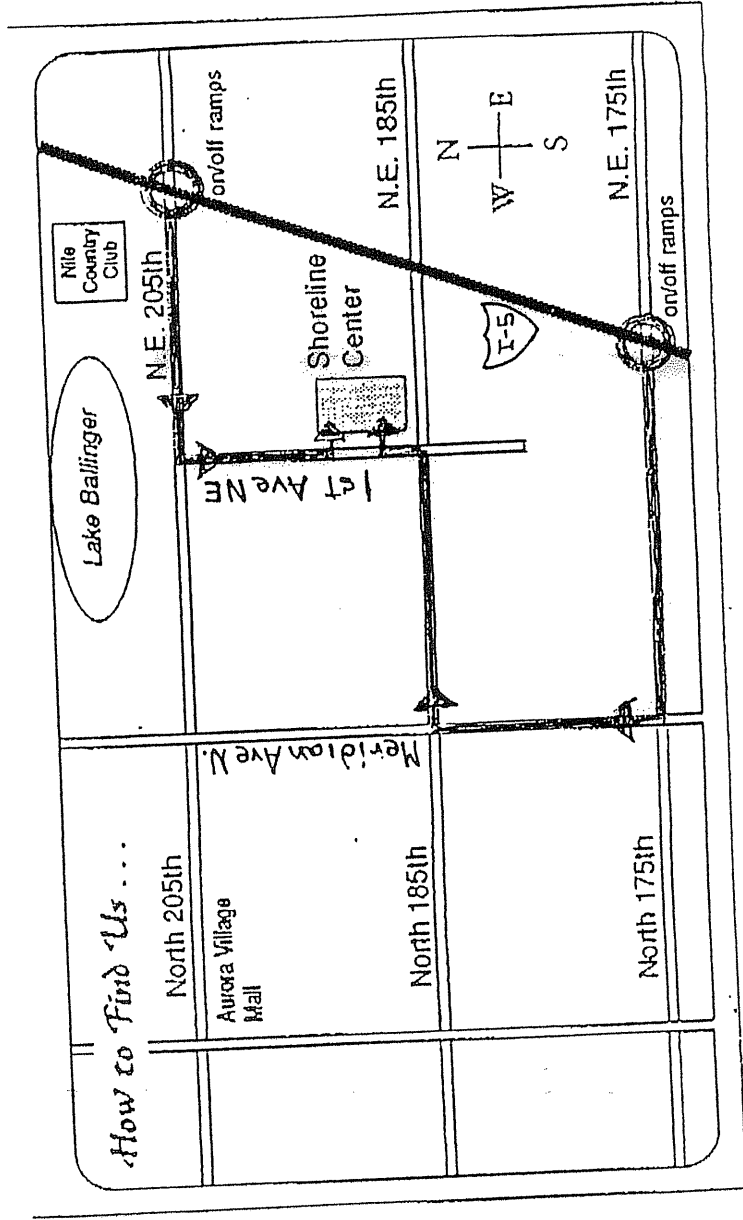
The featured group this year is the Sound of Freedom. They are a multi-media musical group from the U.S Navy Band stationed in Silverdale, Washington. They have agreed to kick off our festival with a special program starting at noon on the day of the festival. We hope you will all make arrangements to come and hear them and to spend the entire day.

Upon arrival at the festival site please have someone from your group check in at the registration table in the foyer of the auditorium. You will receive a packet at that time with name tags etc... enclosed. There will be a roped off area in the foyer where you can store your instruments, cases and equipment. Each band will have a small area labeled with their names. There will be people keeping watch over the storage area all day however we can not, nor can the Shoreline Arts Festival, be responsible for lost equipment so if you have concerns please keep your instrument with you or locked securely in you vehicle.

Enclosed in this mailing is a map to the Shoreline Center. There is limited parking so I have been asked by the Arts Festival Staff to ask as many of you as possible to carpool. There are two churches located just to the south of the Center that will open their lots to parking after their services are over. We would like to have you drop off instruments and equipment at the marked drop off area and then proceed to available parking.

We have decided not to try to organize a group potluck since there is food being offered for sale as part of the Arts Festival itself plus the logistics of this site just do not offer a suitable location for such a get together. We do encourage you to come and visit the many exhibits that are going on during the Shoreline Arts Festival and to checkout the food booths

Where Love Of Music Combines with Community Service



N.E. 145th

North 145th

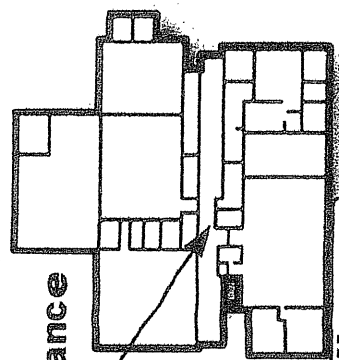
Shoreline Center

18560 1st AVE NE
Shoreline, WA 98155
(206) 368-4122

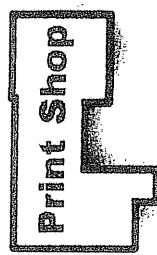
- A Board Room
- B Conference
- C D-105
- D Lounge
- E Tech Lab
- F Library
- G I-107

To Stadium
↑

- 1 Arden
- 2 Alumni
- 3 Aurora
- 4 Ballinger
- 5 Cromwell
- 6 Hamlin
- 7 Horizon
- 8 McAleer
- 9 Richmond
- 10 Northridge
- 11 Ronald
- 12 Sheridan



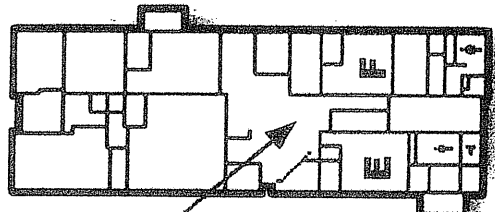
Maintenance



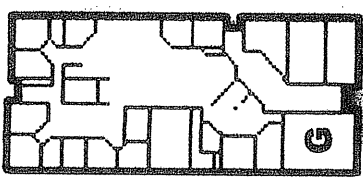
Print Shop

- 13 Studio
- 14 Shoreline
- 15 Spartan
- 16 Highlander
- 17 Mt. Rainier
- 18 Auditorium

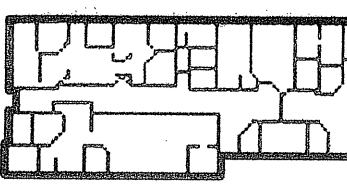
IMC



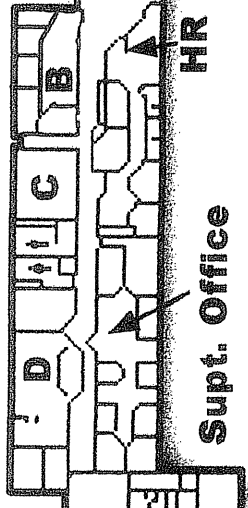
"H" Bldg



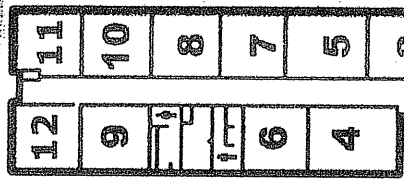
"I" Bldg



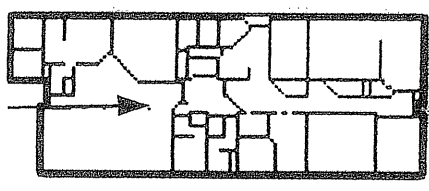
"J" Bldg



Supt. Office



Senior Center



South Parking Lot

West Parking Lot
1st Ave NE

Drop off

NE 185th St

NORTH PARKING